

# *USB Disk Pro*

## *User Manual*

ver 2.24

# **Table of Contents**

|    |   |    |
|----|---|----|
| 1  | About USB DISK Pro                      | 2  |
| 2  | New Features                            | 3  |
| 3  | Important Notices                       | 3  |
| 4  | Main Screen                             | 5  |
| 5  | Apparatus A – Setup Password            | 6  |
| 6  | Apparatus A – Change Password           | 9  |
| 7  | Apparatus B – Disable (Remove Password) | 10 |
| 8  | Apparatus C – Unlock Device             | 11 |
| 9  | Apparatus H – Password Hint             | 12 |
| 10 | Dual Language Interface Auto Detect     | 13 |

## About USB Disk Pro

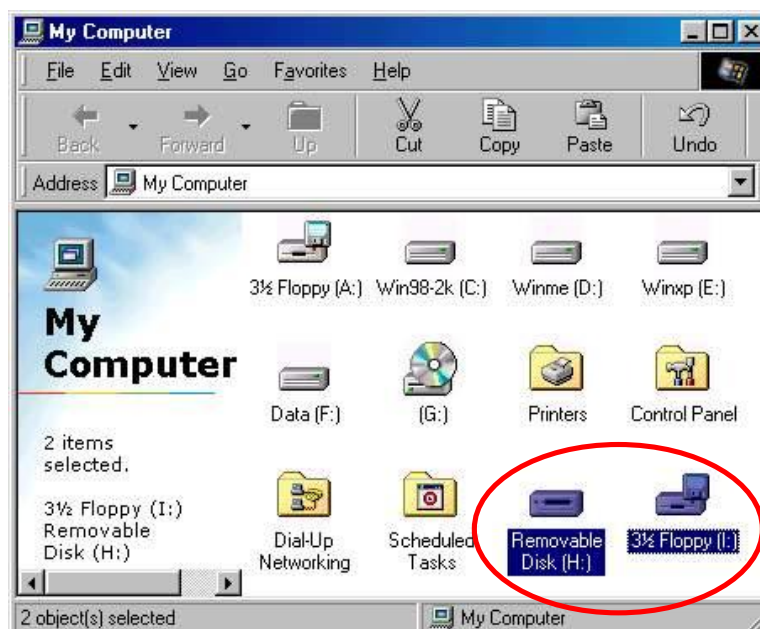
Secure your personal data with USB Disk Pro. USB Disk Pro has some new features. Unlike USB Disk, the USB Disk Pro was *divided into two partitions*, for which one of the partitions is 1.44MB, same size as a floppy disk; and the other partition takes the balance. (Show Below)

## Two Positions

- (1) **FDD (Floppy Disk) state.** (switch at write protected position)



- (2) **HDD (Hard Drive) state.** (switch at normal position)



## **New Features**

1. Allows user to set own password.  
(*maximum 8 or 16 characters, depending on firmware*)
2. Allows user to enter “Password Hint”, in case user forgot about their password.  
(*maximum 32 characters*)
3. Automatically format the HDD part of the USB Disk Pro when enter wrong password 6 times.
4. Auto detect English and Traditional Chinese interface support.

## ***IMPORTANT Notices***

1. When using USB Disk Pro with the security application program, only **ONE** USB Disk Pro is allowed at a time.  
**DO NOT PLUG IN TWO OR MORE USB DISK PRO AT THE SAME TIME.**

## Windows 2000 / 2000 SP1 / 2000 SP2 Users Only

2. Since Windows 2000 only can support **ONE** removable disk drive per USB port, therefore please follow the following procedures when using USB Disk Pro in Windows 2000 environment.
  - (i) Switch to HDD mode first
  - (ii) Insert USB Disk Pro to USB port, wait till Windows recognized the device
  - (iii) Remove USB Disk Pro from USB port
  - (iv) Switch to FDD mode
  - (v) Re-insert to USB port
  - (vi) Copy the security application program (.exe file) to desktop
  - (vii) Remove USB Disk Pro from USB port
  - (viii) Switch back to HDD mode
  - (ix) Reinsert USB Disk Pro to USB port
  - (x) Access the security program from desktop and use USB Disk Pro normally

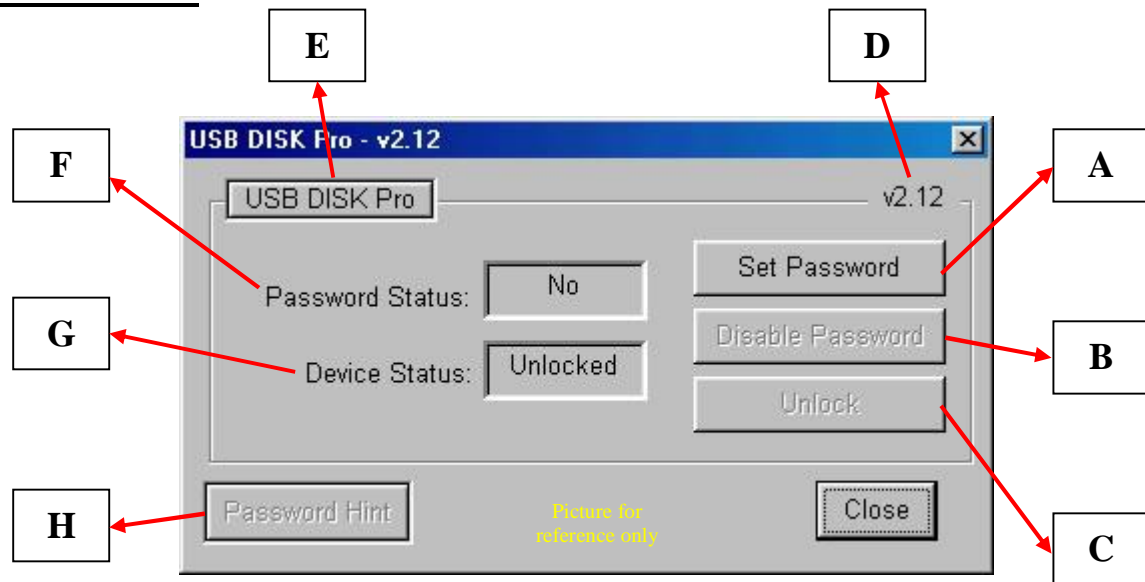
**NB : You only have to do step (i) ~ (viii) once or copy the security AP from CD and skip step (i) ~ (vii).**

**If you have upgraded to Windows 2000 SP3 or SP4, then there is no need to do the above steps, because Windows 2000 SP3 & SP4 can support multi drives.**

## Mac OS Users Only

3. There is **NO** Security Application Program available for Mac OS's yet.
4. Mac OS 8.6 ~ 10.1.1      These operating systems can only support **ONE** removable drive. So, when you switch to “**FDD**” mode, you will only see the 1.44MB drive in Mac. If you switch to “**HDD**” mode, you will only see the hard drive part of the USB Disk Pro. (Total capacity – 1.44MB)
5. Mac OS 10.1.2 and/or later      From Mac OS 10.1.2 onward, Mac OS can support multi removable drives, so you will see two drives as you will in any of the Windows operating system

## Main Screen



**A** Set up / Change password

**B** Disable / Remove password

**C** Unlock Device

**D** Version

**E** About and special function record

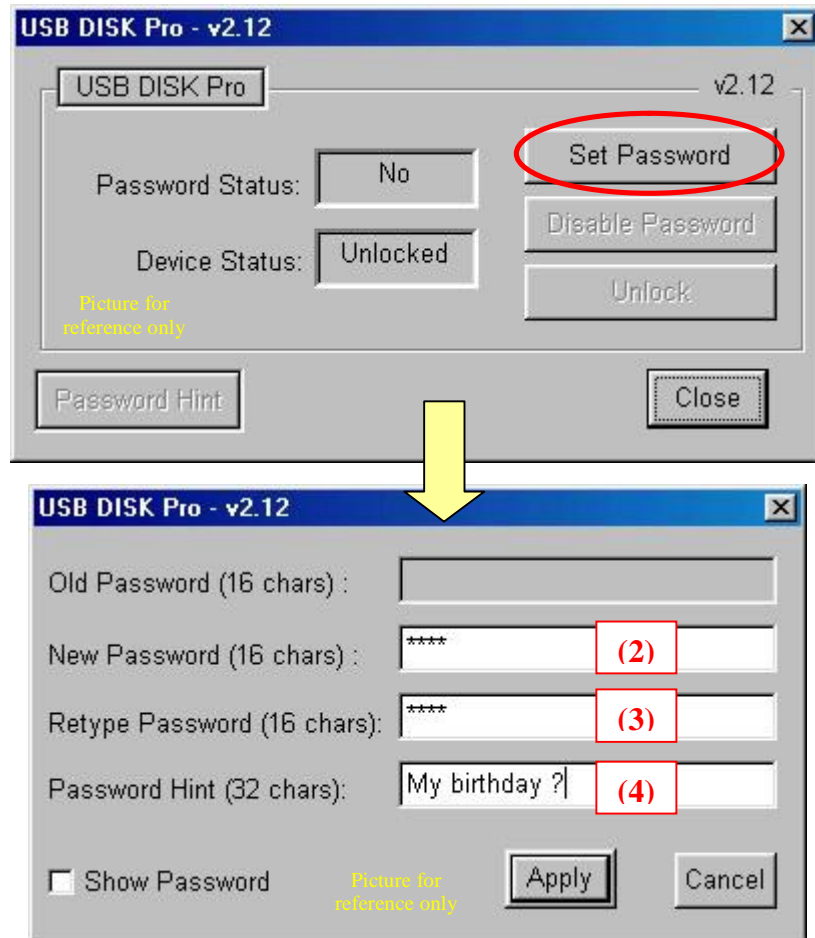
**F** Password Status – tells you whether a password has been set up or not

**G** Device Status – tells you whether the device is locked or unlocked

**H** Forgot Password ? – don't worry, let password hint remind you

## Apparatus A – Setup Password

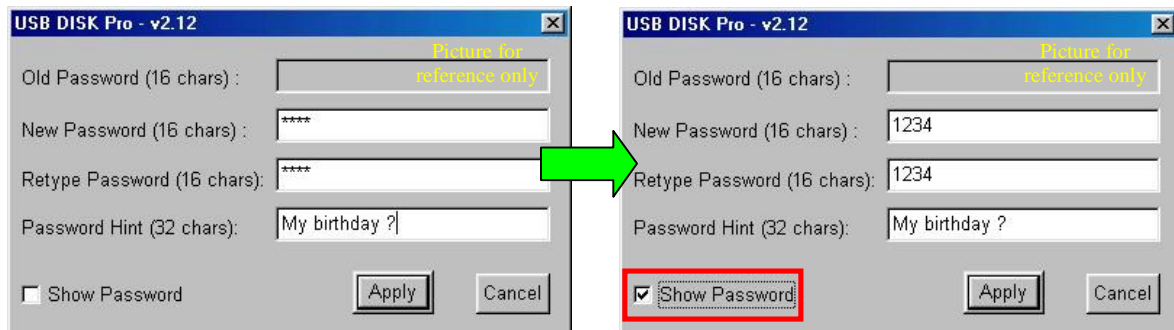
(1) Press “Set Password” to setup a password, you will see the following screen



(2) Enter a password of your choice. (max 8 or 16 characters long, firmware dependent)

(3) Confirm password by re-enter the password you set in (2).

(4) Enter a hint of your own, in case you forget your password. You can enter anything you want within 32 characters.

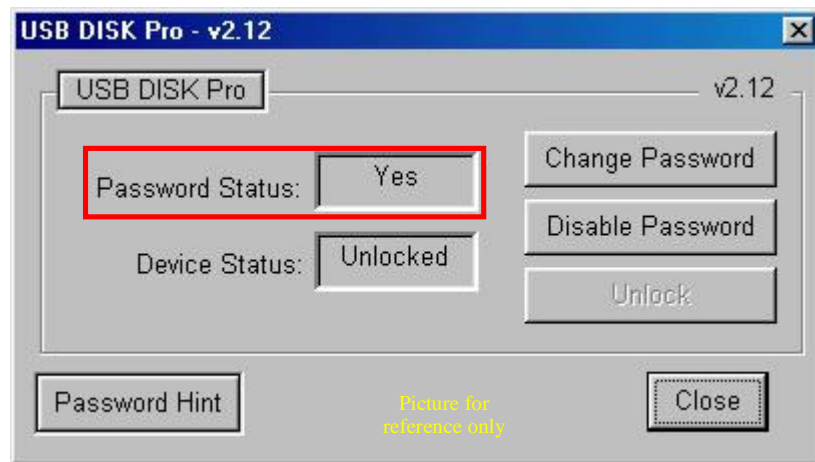


PS : Tick “Show Password” box if you want see what you have entered.

- (5) Press “Apply” to confirm changes. The following message window will pop up. This message window tells you, that the device will be automatically locked after you remove the device from USB port.

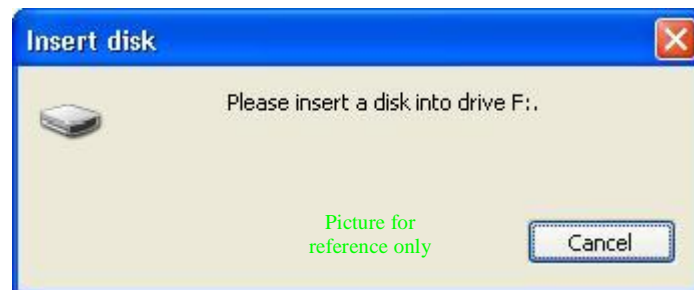


- (6) Once you have set up the password correctly, you will notice the change in “Password Exist” Status.

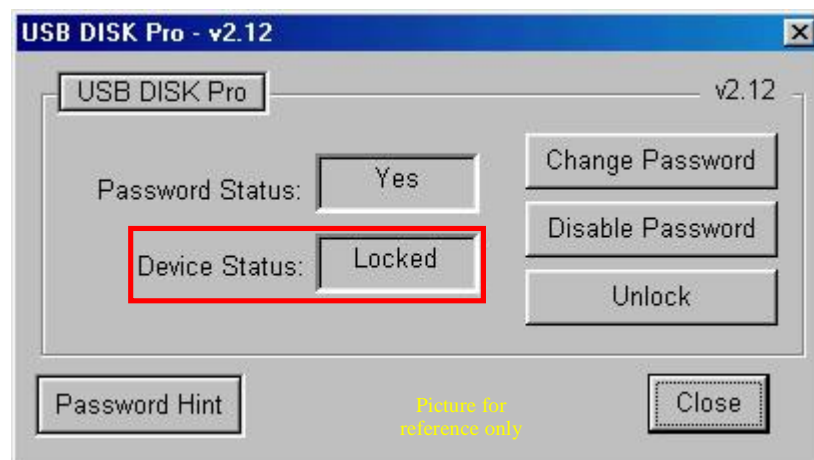




**NOTE :** When you remove the device from USB port and re-insert it again, the device will automatically be locked. If you try to access it, it will reply with some error message. (depending on the operating system, the error message will be different)

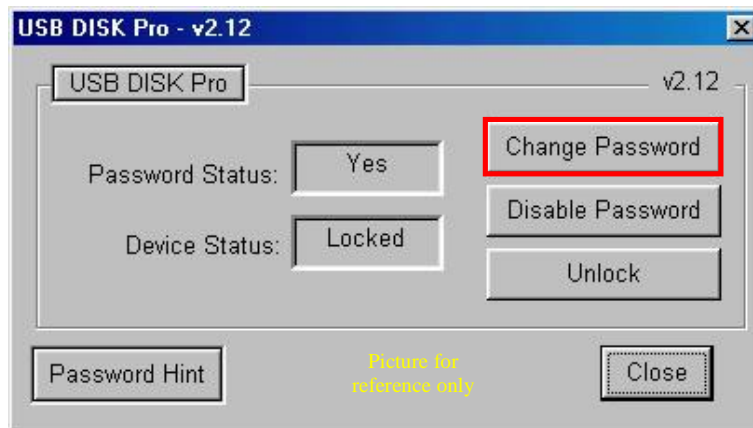


If you execute the Security AP, you will see that the device is LOCKED.



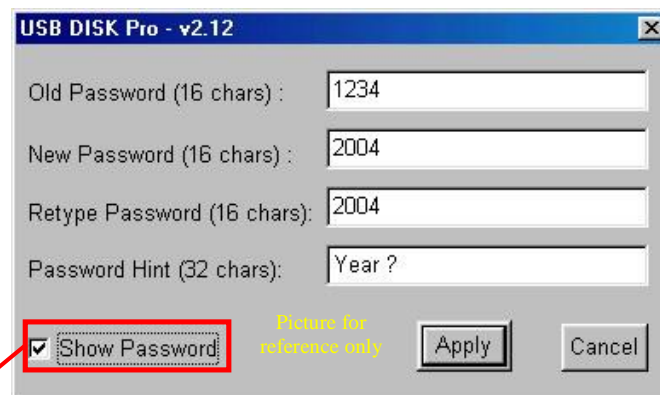
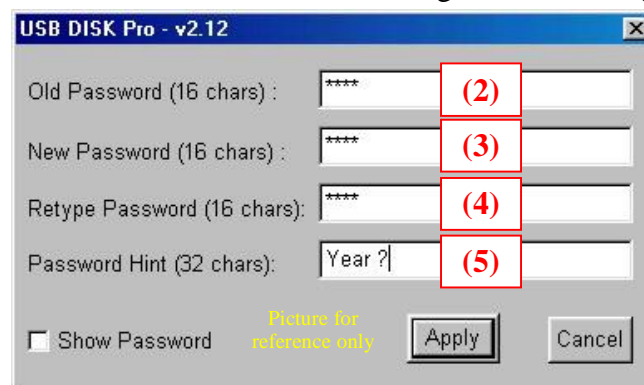
## Apparatus A – Change Password

- (1) If you have already setup a password before, you can change the password you set.  
Click “Change Password” to change.



- (2) Enter your current password  
(3) Enter a new password of your choice  
(4) Confirm the new password by re-typing it  
(5) Change password hint if you wish, otherwise it will kept the old password hint.

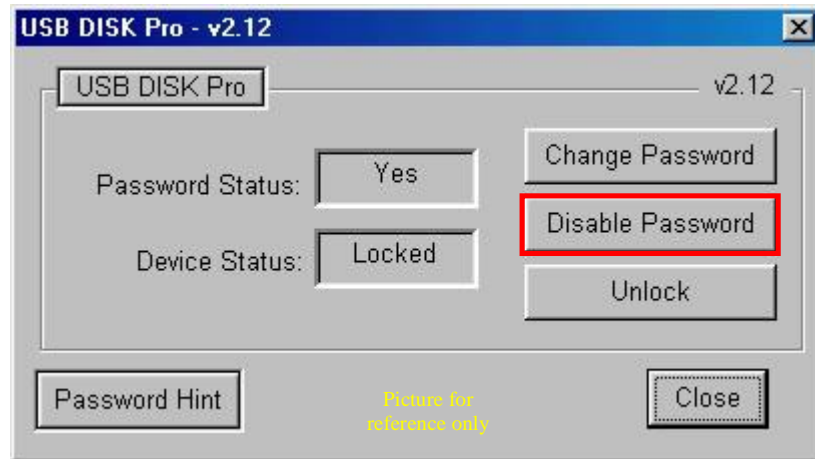
**PS :** (i) Password Hint does not have to enter/change, if you don't want to use it.  
(ii) Password Hint can only be edit with new password.  
ie : Password Hint can not be edit/change without change of password.



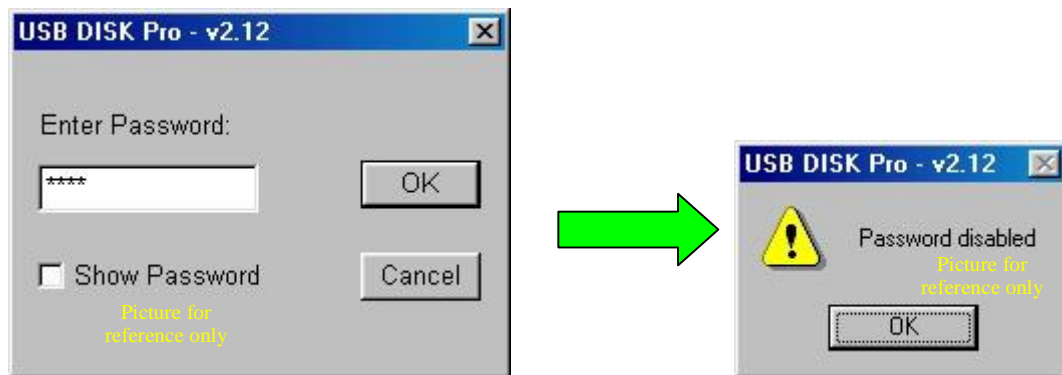
- (iii) Use “Show Password” to see what you have typed.

## Apparatus B – Disable (Remove Password)

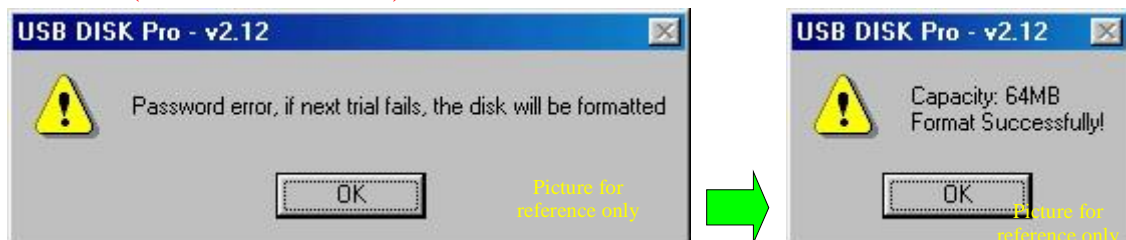
- (1) If you no longer want to use the password, select “Disable Password” to remove it.



- (2) Enter your password.

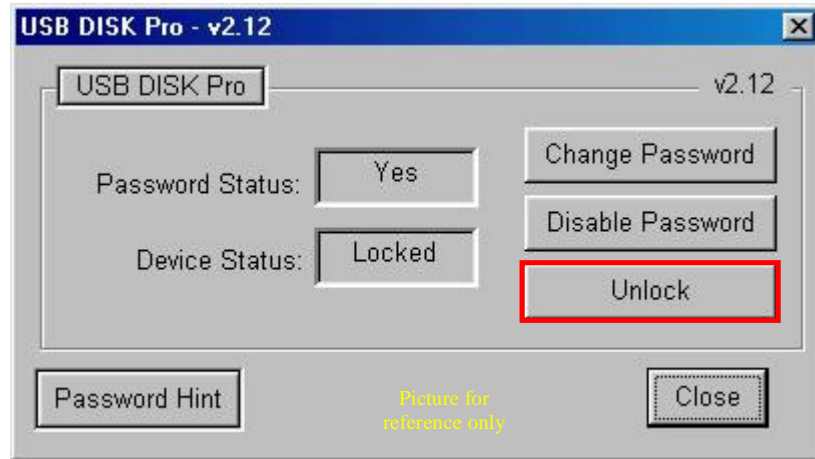


**You only have SIX chances to enter password correctly. If you enter wrong password six times, it will automatically FORMAT your HDD partition of your Device. (All data will be lost)**

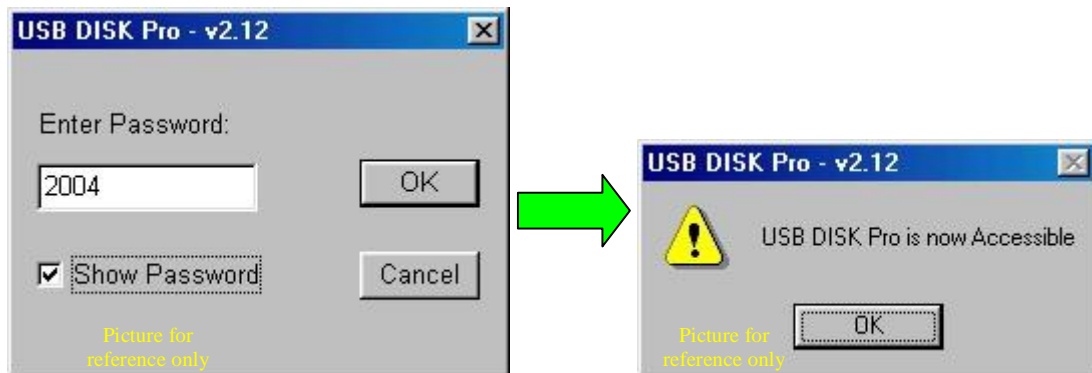


## Apparatus C – Unlock Device

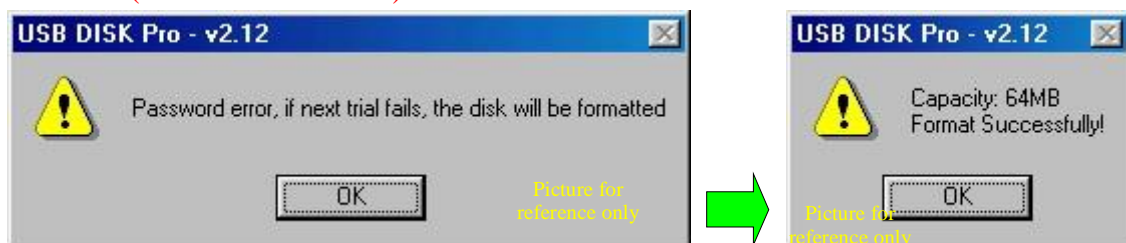
- (1) If you have setup a password, before you can access the HDD partition of the USB Disk, you must “Unlock” first. (enter password) Select “Unlock” to enter password.



- (2) Enter your password.



**You only have SIX chances to enter password correctly. If you enter wrong password six times, it will automatically FORMAT your HDD partition of your Device. (All data will be lost)**



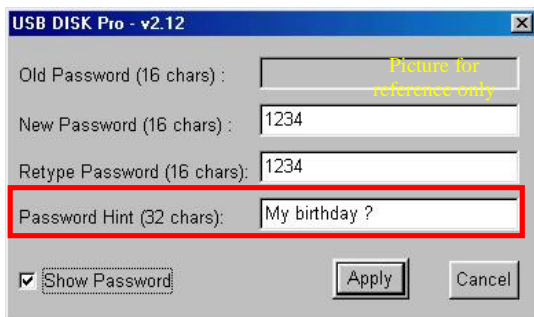
## Apparatus H – Password Hint

As a human being, we all forget things from time to time, so when you setup/change your password, you can also edit a “Reminder” of your choice, in case you forget your password, it will help to remind you what your password was.

- (1) Enter a hint of your choice. (maximum 32 characters long)

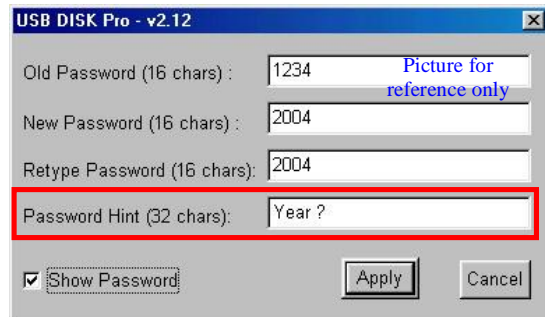
You can edit the hint only when you

### (A) Setup A New Password



OR

### (B) Change Password



- (2) Press “Password Hint” any time to get your reminder.



## Dual Language Interface Auto Detect

If your Windows operating system is in Traditional Chinese, then the security application program will automatically switch to Traditional Chinese interface.



If your Windows operating system is not in Traditional Chinese, then English interface will apply.

