

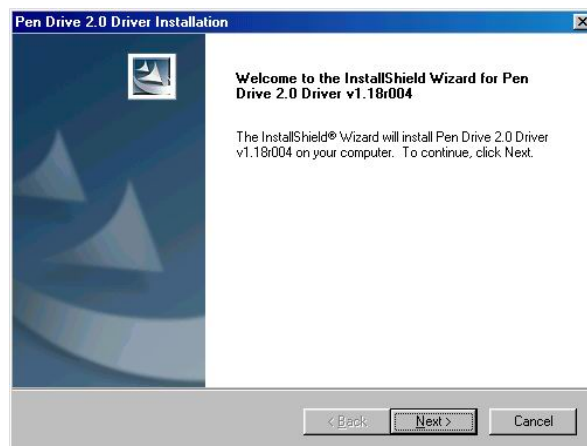
# USB Disk 2.0 Series Specification

## Features

1. Compatible with USB specification revision 2.0.
2. USB specification revision 1.1 compatible.
3. Built-in USB 2.0-to-Flash interface controller with bulk-only transport of USB mass storage class, support PIO mode 4.
4. Support Samsung & Toshiba NAND flash memory of 1Gbit, 2Gbit and 4Gbit.
5. Capacity available in **128MB, 256MB, 512MB and 1GB.**
6. Support Windows 98 / 98 SE with device driver
7. Support Linux Kernel version 2.4.10 or above *without* device driver. (USB 2.0)
8. Support Linux Kernel version 2.4.0 or above *without* device driver. (USB 1.1)
9. Support Windows ME, Windows 2000 and Windows XP *without* device driver.
10. LED indicator when in use.
11. Write/Delete protection switch. Protect you from accidentally deleting of data.
12. Hot Plug & Play - Enable you to install anytime.
13. Durable solid-state storage – data retention for at least 10 years.
14. No external power is required - DC 4.5V ~ 5.5V from USB port.
15. Shock resistance : 1000G (maximum)
16. Power consumption < 145mA when in use.
17. Altitude : 80,000 feet (relative to sea level)
18. Acoustic noise : 0 dB (at one meter)
19. Vibration : 15 G peak to peak max
20. 1 year warranty

## Driver Installation (Win 98 / 98 SE)

1. Double check that you have installed USB 2.0 support driver from your motherboard driver CD disc
2. Insert the driver CD disc into your CD-Rom
3. A menu will automatically pop up
4. Select Install / Remove Driver to start installation
5. Follow the on screen instruction to install driver



6. Restart machine after installation is completed



7. Insert your device

***Caution : Please install driver first before plug in your device!!!***

## **Driver Installation** (Win ME / 2000 SP3 / XP)

For these operating systems, no driver is required; simply plug in your device into your USB port on your computer, and the operating system will automatically recognize the device with its built-in driver (USB Mass Storage Class Driver).

## **Driver Installation** (Mac OS 9.x+)

Again, no driver is required for Mac OS users. However, since Mac is not USB 2.0 compliance, hence, you will only have the performance as in USB 1.1.

## **Driver Installation** (Linux Kernel 2.4.0+)


1. Plug in the device
2. Please check whether it had been enumerated in file `/proc/scsi/scsi`.  
If not please check whether modules had been loaded,  
i.e : `usb-storage`, `scsi_mod`, `sd_mod`, ..., by using `"/sbin/lsmmod"`.  
If not become root or use sudo with `"modprobe usb-storage"`.
3. If the device is enumerated in `/proc/scsi/scsi`, then it is OK to mount the Pen Drive <sup>plus</sup> 2.0 to existed desired directory with `"mount/dev/sda1 <desired directory>"`.  
If there is no partition existed, please omit the digit. "a" means first LUN (Logical Unit), then "b", "c", ... and the digit means the partition number.  
If fail, please send us the output of `'dmesg'` and make sure those messages are collected after Pen Drive <sup>plus</sup> 2.0 is plugged in.
4. You may use "Control Center" from Gnome -> Mount Points (left side) -> Hard Drive and select the appropriate device and partition, specify the mount point (existed directory) and others, i.e. uid, gid, permission, ..., of course you need root privilege.  
Suggest you un-mount it to avoid error messages on the next booting.
5. To eject, use `"eject <desired directory>"` to flush the buffer and clear the mount information.
6. After mounting the Pen Drive <sup>plus</sup> 2.0, you may do any file operations on it.
7. Some latest distributions may automatically mount the USB device on the desktop.
8. If there is any problem, please attach the `"dmesg"` output and/or `/var/log/messages`.

# Disconnection

## **[A] Windows 98 / 98SE**

Wait till the LED light dimmed, then remove directly from USB port.

## **[B] Windows ME / 2000 / XP**

Double-click  (Unplug or Eject Hardware) in the system tray in the lower right of your screen. A window will appear, select the name of the device that you want to remove, and then click the “Stop” button.

Confirm the device that you want to remove by click “OK”, wait till the LED light dimmed, then remove from USB port.

## **[C] Mac OS 9.x or above**

Drag the device icon to the *Trash Can*, confirm remove, wait till LED light dimmed, then remove from USB port.

## **[D] Linux Kernel 2.4.0 or above**

To remove, use "eject <desired directory>" command to flush the buffer and clear the mount information.